

## 5C Health Emergency Simulation Exercise

# Fact Sheet of Anycountry

**The 5C Health Emergency Simulation Exercise is based on a fictitious scenario of an unfolding epidemic originating in 'Anycountry', an imaginary low-income country with a weak health system. The film material shown in the exercise is entirely fictitious. Identification with current or previous health events, pathogens, persons, places, buildings or other elements neither is intended nor should be inferred, and any similarities are coincidental.**

### **Topography**

Anycountry is a small landlocked state surrounded by four neighbouring countries. It is a predominantly rural territory with three main cities: Capitalcity, Touristville and Rivertown. Anycountry's sole international airport is situated in Capitalcity and offers direct flight connections to multiple foreign countries. Touristville is located in a world-famous mountain range, which is the main attraction drawing international tourists to Anycountry and thus represents an important source of income (Figure 1).

### **Population**

Anycountry has a population of eight million, 30% of whom are below 15 years of age. Its inhabitants have an average life expectancy of 60 years and the overall literacy rate is 76% (Table 1).

### **Economy**

Agriculture and mining are Anycountry's strongest economic sectors and form the basis of most people's livelihoods. The average monthly net income is USD 98 (Table 1). Only 66% of the population has access to electricity and running water. Cross-border trade with neighbouring countries traditionally plays a major role in the economy, but many goods are exported globally. The most financially profitable export products are rare earth elements used for high-tech products and within industrial settings abroad.

### **Health system**

Anycountry has 0.5 physicians per 1,000 people or approximately 4,000 physicians in total (Table 1), and it has five tertiary care hospitals (Figure 1). The overall number of hospital beds per 1,000 people is very low at 0.8. Private clinics play a major role in primary health care provision and fill the gaps left by a weak public health system. Health care is mainly financed through out-of-pocket payments. Total expenditure on health is USD 45 per capita – one of the lowest levels in the world. The infectious disease surveillance system is based on public health care facilities. The private sector is not yet integrated into this system.

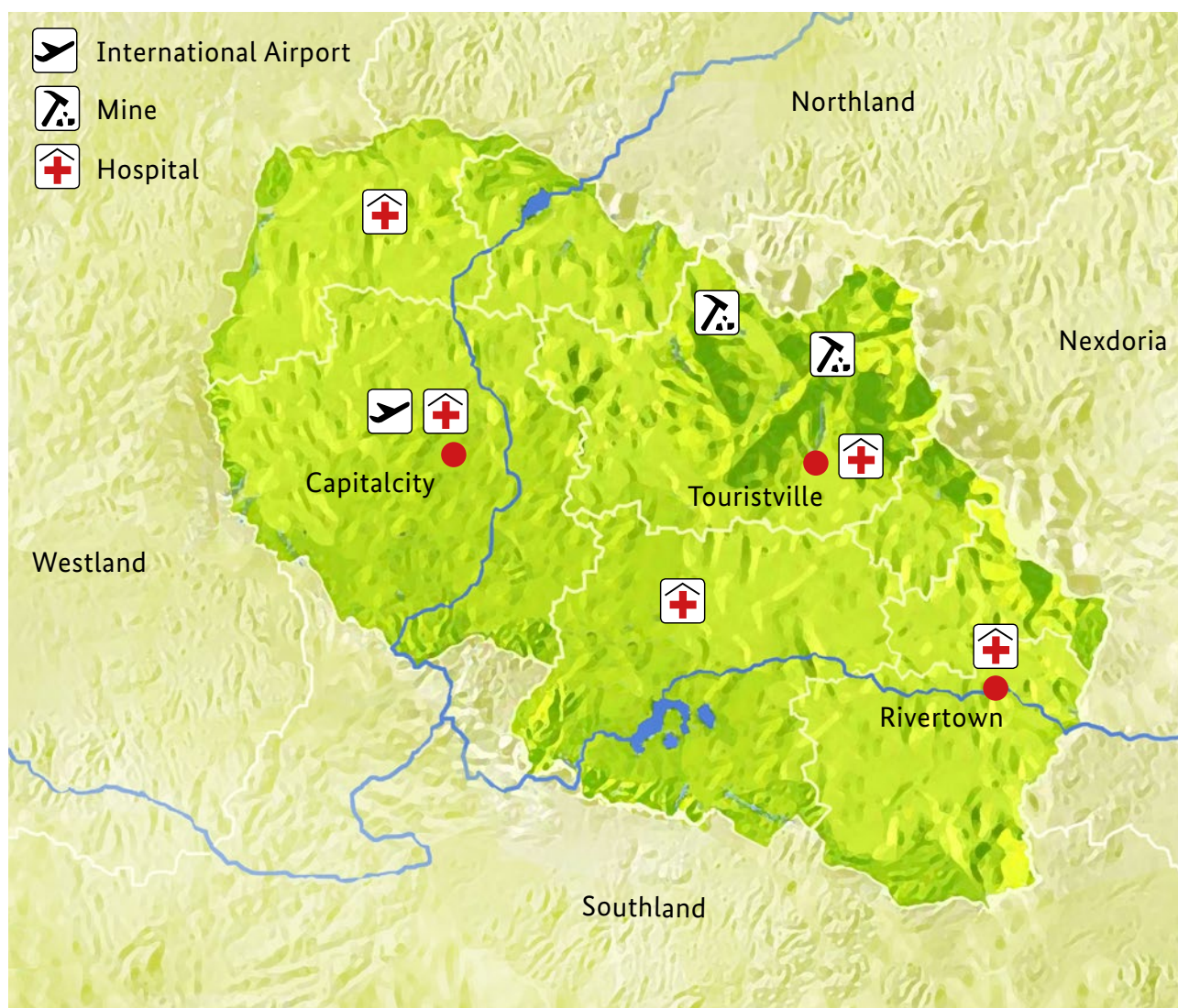


Figure 1. Map of Anycountry showing its main features, resources and boundaries

Key Indicators	Anycountry	G20 countries		
		Minimum	Maximum	Median
<b>General indicators</b>				
Population in millions (total)	8	23	1,400	79
Population ages 0–14 (% of total)	30	13	30	19
Population ages 15–64 (% of total)	65	62	74	66
Population ages 65 and above (% of total)	5	3	25	13
Life expectancy (years)	60	57	83	78
Rural population (% of total)	70	8	68	21
Average monthly income (current USD)	98	104	4,400	1,600
Literacy rate of population aged 15 and above (% of total)	76	71	99	99
Agriculture, value added (% of GDP)	26	0.7	18	2
Employment in agriculture (% of total employment)	57	0.6	50	4
<b>Selected health indicators</b>				
Total health expenditure (% of GDP)	3.2	2.8	17.1	8.5
Annual health expenditure per capita (current USD)	45	69	9,000	1,500
Physicians (per 1,000 people)	0.5	0.2	4	2
Hospital beds (per 1,000 people)	0.8	0.7	8	3

Table 1. Comparison of key indicators of Anycountry and the G20 (see Ref. 7)