



Patient Safety Summit 2017

Hand rub consumption has almost doubled in 132 German Hospitals over a period of 9 years

Petra Gastmeier

Institute of Hygiene und Environmental Medicine
Charité – University Medicine Berlin



- In January 2008 the German national hand hygiene campaign was launched
- based on the framework of WHO's Clean Care is Safer Care program to improve HH adherence in health care settings.
- > 1200 Institutions participating in 2017

Aktion Saubere Hände

Surveillance of hand hygiene

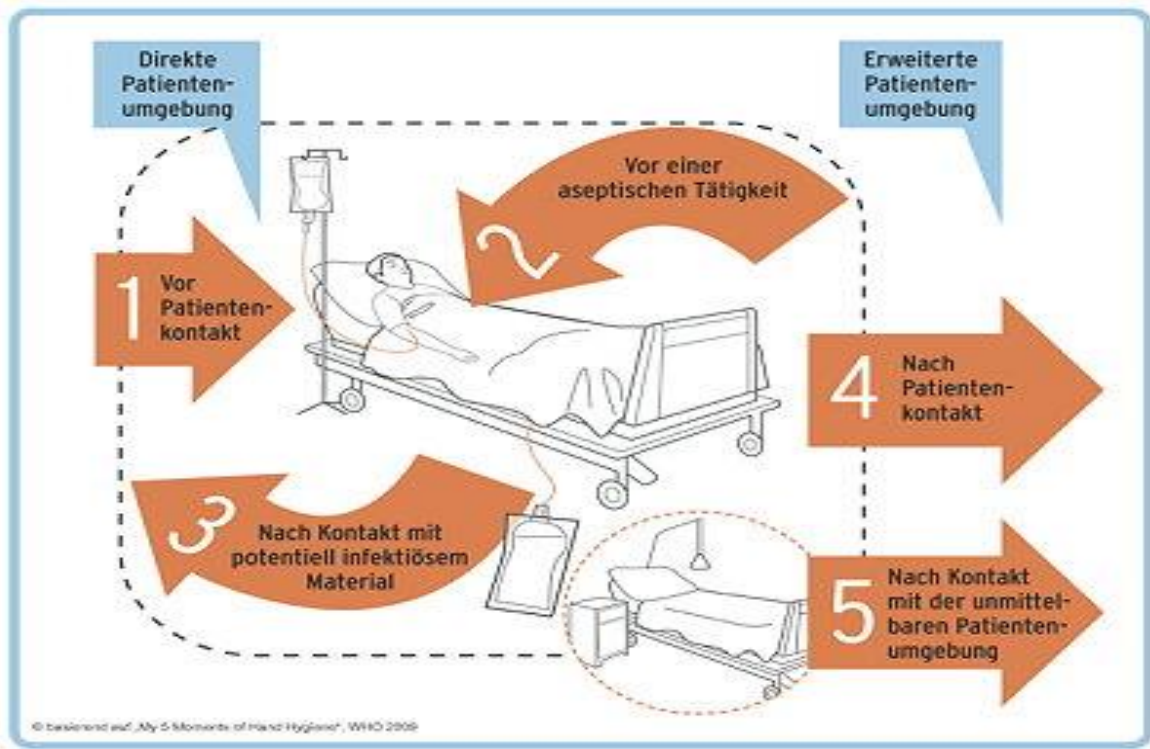
- Compliance observations
- Hand rub consumption



Aktion

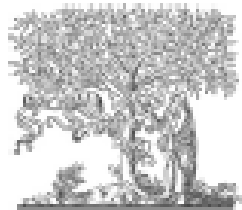
Saubere Hände

Compliance observations



National reference data 2014

Journal of Hospital Infection 92 (2016) 328–331

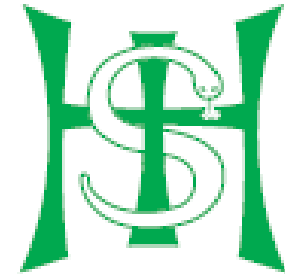


ELSEVIER

Available online at www.sciencedirect.com

Journal of Hospital Infection

journal homepage: www.elsevierhealth.com/journals/jhin



Compliance with hand hygiene: reference data from the national hand hygiene campaign in Germany

W. Wetzker, K. Bunte-Schönberger, J. Walter, G. Pilarski, P. Gastmeier*,
Ch. Reichardt

Institute of Hygiene and Environmental Medicine, Charité – University Medicine Berlin, Berlin, Germany

109 participating hospitals collected data from 576 wards

Table III
Hand hygiene (HH) compliance rates by intensive care unit (ICU) type

| Type of ICU | Hospitals | Units | Opportunities | Opportunities with HH | Distribution of compliance (P: percentiles) | | | | | |
|-------------|-----------|-------|---------------|-----------------------|---|-----|-----|-----|-----|-----|
| | | | | | Mean | P10 | P25 | P50 | P75 | P90 |
| Surgical | 17 | 25 | 6184 | 4728 | 76% | 60% | 69% | 75% | 87% | 94% |
| Medical | 14 | 14 | 2841 | 2183 | 77% | 57% | 64% | 73% | 86% | 93% |
| Neonatal | 11 | 11 | 1921 | 1601 | 83% | 68% | 79% | 90% | 96% | 97% |

Table IV
Hand hygiene (HH) compliance rates by non-intensive care unit type

| Type of unit | Hospitals | Units | Opportunities | Opportunities with HH | Distribution of compliance (P: percentiles) | | | | | |
|----------------|-----------|-------|---------------|-----------------------|---|-----|-----|-----|-----|-----|
| | | | | | Mean | P10 | P25 | P50 | P75 | P90 |
| Surgical | 61 | 97 | 21,149 | 15,176 | 72% | 57% | 64% | 73% | 81% | 90% |
| Medical | 61 | 108 | 20,432 | 14,546 | 71% | 54% | 61% | 71% | 79% | 88% |
| Paediatric | 15 | 17 | 2950 | 2314 | 78% | 62% | 67% | 77% | 91% | 99% |
| Rehabilitation | 6 | 15 | 3051 | 2025 | 66% | 42% | 58% | 70% | 78% | 79% |

Compliance and hand rub consumption

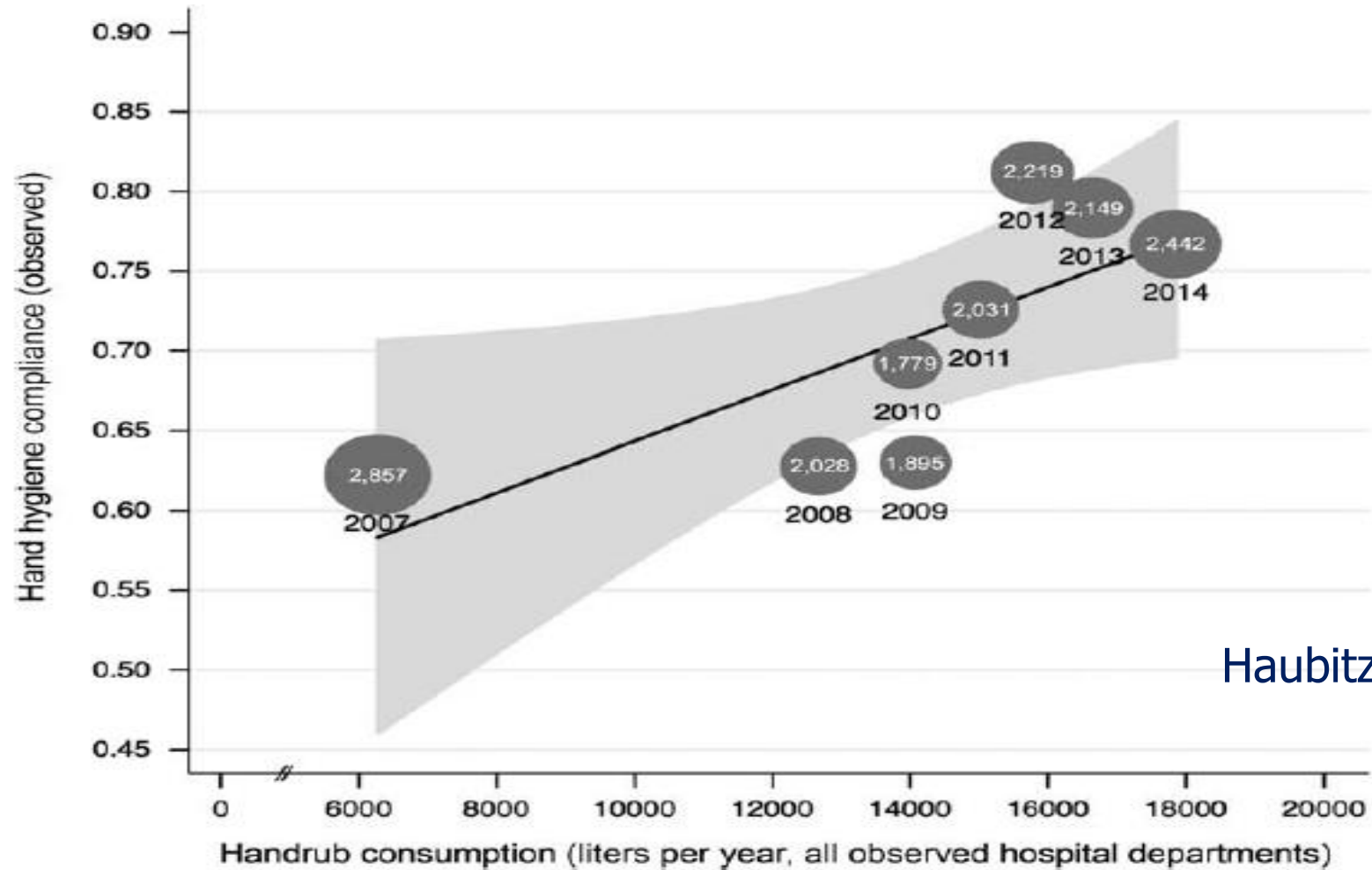
Handrub Consumption Mirrors Hand Hygiene Compliance

Sebastian Haubitz, MD;^{1,2} Andrew Atkinson, MSc;¹
Tanja Kaspar, RN;¹ Doris Nydegger, RN;¹
Anne Eichenberger, PharmD;³ Rami Sommerstein, MD;¹
Jonas Marschall, MD¹

We assessed handrub consumption as a surrogate marker for hand hygiene compliance from 2007 to 2014. Handrub consumption varied substantially between departments but correlated in a mixed effects regression model with the number of patient-days and the observed hand hygiene compliance. Handrub consumption may supplement traditional hand hygiene observations.

Infect. Control Hosp. Epidemiol. 2016;1–4

Compliance and hand rub consumption



Haubitz et al. ICHE 2016

FIGURE 1. Correlation of handrub consumption and hand hygiene compliance (95% CI between lines in light gray area), including annual number of observed indications (dark gray circles).

Alcoholic hand rub consumption (AHC) per patient day 2015



Data from 1136 ICUs in 697 hospitals
Mean 116 ml / patient day (67-176 ml)

Data from 7920 Non ICUs in 871 hospitals
Mean 27 ml/ patient day (15-49 ml)

**HAND
KISS**



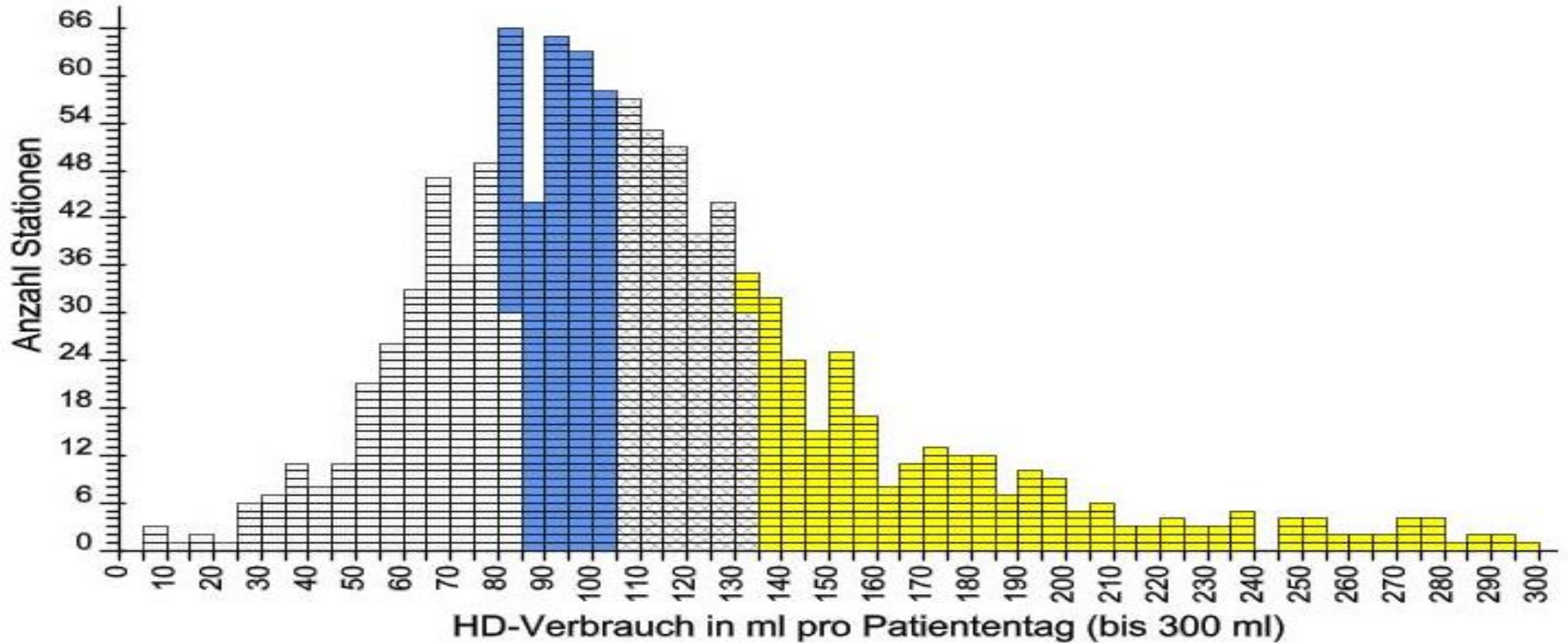
Keine Chance den Krankenhausinfektionen

Distribution of hand rub consumption (ml/patient day)

| Type of ICU | No hospitals | No ICUs | 10.P. | 25.P. | Median | 75.P. | 90.P |
|----------------------|--------------|-------------|-----------|-----------|------------|------------|------------|
| Surgical | 96 | 114 | 83 | 99 | 120 | 153 | 183 |
| Medical/ surgical | 564 | 620 | 65 | 83 | 102 | 128 | 156 |
| Medical | 122 | 135 | 68 | 90 | 110 | 134 | 157 |
| Neonatal | 101 | 105 | 74 | 99 | 133 | 172 | 211 |
| Pediatric | 47 | 49 | 64 | 113 | 153 | 200 | 275 |
| TOTAL | 697 | 1136 | 67 | 87 | 109 | 137 | 176 |

Distribution of hand rub consumption in intensive care units (ml per patient day) 2014

Stratifizierung: Intensivstationen / Alle



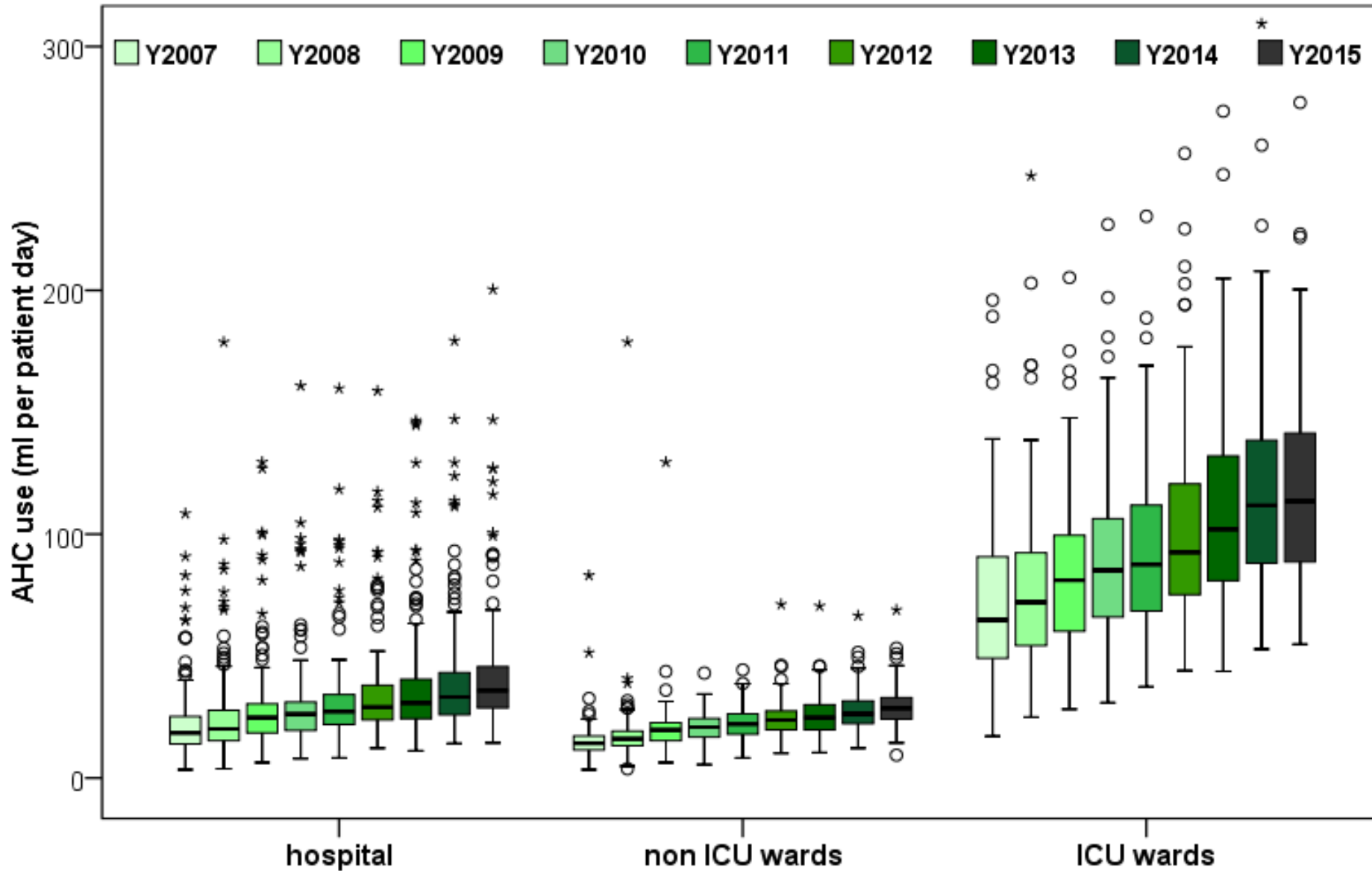
Increase between 2007 and 2015

- Only hospitals providing data continuously from 2007 to 2015 were included
- The median value for annual change of AHC was calculated as the difference in milliliters (mL) per patient day (PD) and difference in percentage relative to baseline

HAND-KISS

Development of hand rub consumption 2007 – 2015 in hospitals with continuous participation

| Type of unit/wards | Number of units/wards | 2007 Median (ml / Patient day) | 2015 Median (ml / Patient day) | Increase in % |
|----------------------|-----------------------|-----------------------------------|-----------------------------------|------------------|
| Intensive care units | 181 | 67 | 119 | 78 |
| Non-ICUs | 917 | 14 | 29 | 110 |
| Total | 1 098 | 16 | 31 | 98 |



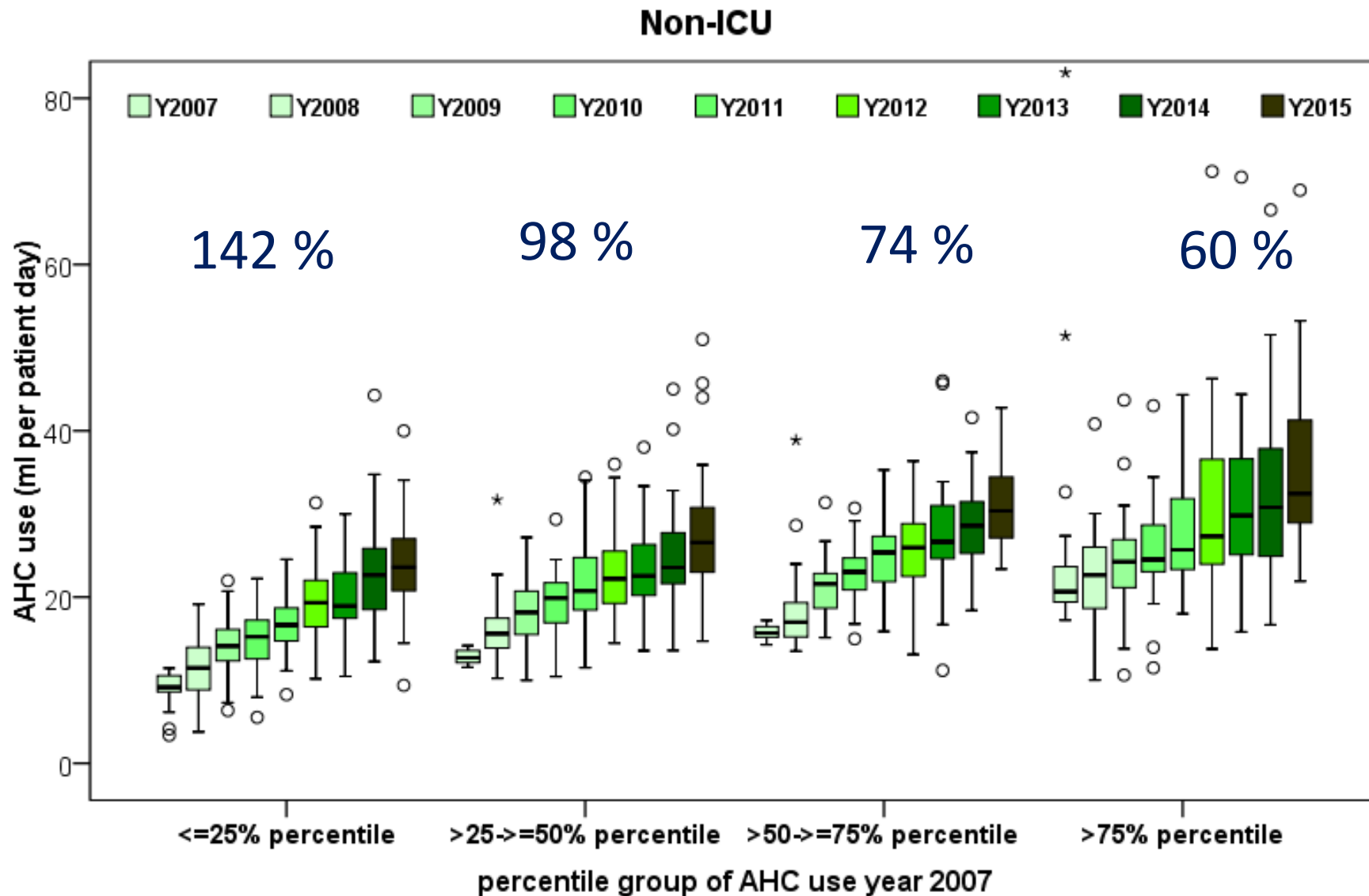
Increase = 91 % (58-140)

Increase = 98 % (66-146)

Increase = 75 % (34-132)

Changes in alcohol-based hand rub consumption in ml per patient day from 2007 to 2015 for ICUs and non-ICUs as well as on the hospital level

Changes in alcohol-based hand rub consumption in ml per patient day 2007-2015 according to baseline for non-intensive care units (n= 120)





**Aktion
Saubere Hände**



Suchbegriff



ASH

| |
|-------------------------------|
| Elemente |
| Hintergrund |
| Messmethoden |
| Positionspapiere + Ergebnisse |
| Wissenschaftlicher Beirat |
| Logonutzung |
| Kooperation |
| Krankenhäuser |
| Alten- und Pflegeheime |
| Ambulante Medizin |
| Patienten und Angehörige |
| Förderer |
| Aktionstag 2016 |

Die "Aktion Saubere Hände"

Die "Aktion Saubere Hände" ist eine nationale Kampagne zur Verbesserung der Compliance der Händedesinfektion in deutschen Gesundheitseinrichtungen.

Sie wurde am 1. Januar 2008, mit Unterstützung des Bundesministeriums für Gesundheit,

vom [↗](#) Nationalen Referenzzentrum für Surveillance von nosokomialen Infektionen (NRZ),

dem [↗](#) Aktionsbündnis Patientensicherheit e.V. (APS)

sowie der [↗](#) Gesellschaft für Qualitätsmanagement in der Gesundheitsversorgung e.V.

ins Leben gerufen.

Die Kampagne basiert auf der 2005 gestarteten WHO Kampagne

Jetzt Förderer werden



Aktuelles

19.12.2016 13:18

**Newsletter Dezember
2016**

Wir wünschen Ihnen schöne Feiertage und einen guten Start ins neue Jahr! Aktuelle Informationen...

12.10.2016 13:16

Newsletter Oktober

www.aktion-sauberehaende.de



Nationales Referenzzentrum für Surveillance von nosokomialen Infektionen



NRZ

SURVEILLANCE

SUPPORT

KONTAKT

» [SURVEILLANCE](#) / [KISS](#) / HAND-KISS

Antibiotikaverbrauch

KISS

Teilnahme

Modulfinder

Fragen & Antworten

KISS-Definitionen

KISS-Zertifikat

Import

AMBU-KISS

CDAD-KISS

DEVICE-KISS

HAND-KISS

ITS-KISS

MRSA-KISS

NEO-KISS

ONKO-KISS

OP-KISS

Kurzbeschreibung des Moduls

Modul: HAND-KISS und HAND-KISS-AMBU

Surveillance-Ziel: Verbrauchs-Surveillance

Surveillance-Prinzip: Stations-, Funktionsbereichs- oder Altenpflegeheimbezogen

Patientenkollektiv: Stationäre Patienten, ambulante Patienten, Bewohner in Altenpflegeheimen

Beschreibung:

HAND-KISS: Surveillance des Händedesinfektionsmittelverbrauchs (HDMV) auf Stationsebene oder in Funktionsbereichen (z.B. Dialyse, Endoskopie) sowie Altenpflegeheimen

HAND-KISS-AMBU: Surveillance des HDMV in ambulanten Einrichtungen (Arztpraxen, ambulante Dialysezentren, radiologisches Zentrum, Rettungsstelle etc.) sowie in der Ambulanten Hauskrankenpflege

Für HAND-KISS-AMBU brauchen Sie **keinen** webKess-Zugang!

Suchbegriff



Protokolle und Anleitung

[HAND-KISS-Protokoll S F April 2012 Stand 03.05.12 final.pdf](#)

[HAND-KISS P Protokoll \(Stand 04/2010\)](#)

[Änderung im HAND-KISS P Protokoll \(Stand 04/2010\)](#)

[HAND-KISS-AMBU Protokoll](#)

[HAND-KISS Anleitung webKess](#)

Referenzdaten

[HAND-KISS_S Referenzdaten 2015](#)

www.nrz-hygiene.de